



ශ්‍රී ලංකා ප්‍රජාතාන්ත්‍රික සමාජවාදී ජනරජයේ ගැසට් පත්‍රය

අති විශේෂ

The Gazette of the Democratic Socialist Republic of Sri Lanka
EXTRAORDINARY

අංක 2402/16 - 2024 සැප්තැම්බර් මස 20 වැනි සිකුරාදා - 2024.09.20

No. 2402/16 - FRIDAY, SEPTEMBER 20, 2024

(Published by Authority)

PART I : SECTION (I) — GENERAL

Government Notifications

L.D.-B. 5/2011 (IV) A

THE NATIONAL THOROUGHFARES ACT, No. 40 OF 2008

Order under Section 8

BY virtue of the powers vested in me by Section 8 (1) of the National Thoroughfares Act, No. 40 of 2008, I, Bandula Gunawardane, Minister of Transport and Highways, do by this Order, declare the road specified in the Schedule to this order to be a National Highway.

BANDULA GUNAWARDHANA,
Minister of Transport and Highways.

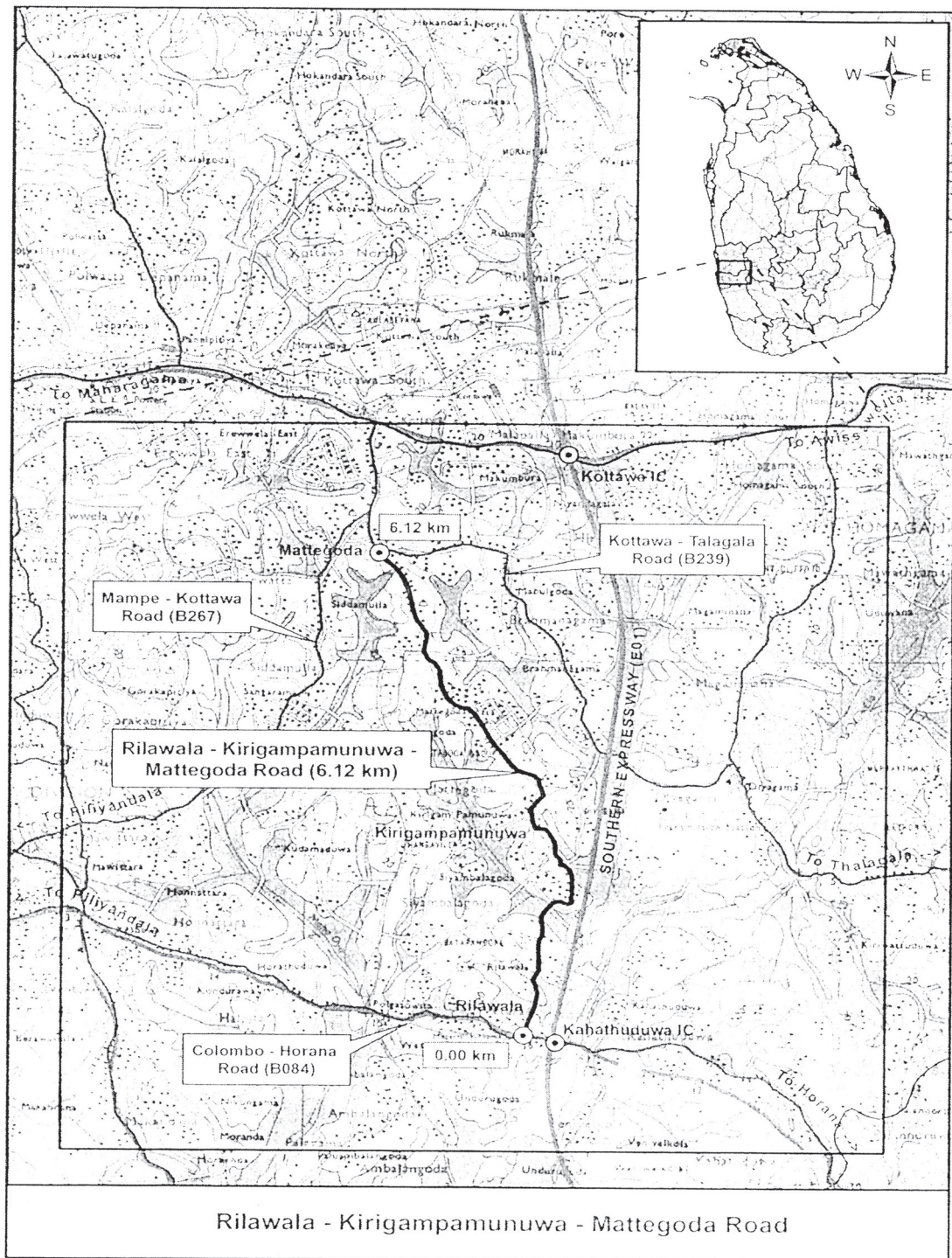
Battaramulla,
19th September, 2024.

SCHEDULE

Name of Road	Section (km)	
	From	To
Western Province		
1. Rilawala - Kirigampamunuwa - Mattegoda Road	0.000	6.123



- (i) Name of the road : **Rilawala -Kirigampamunuwa-Mattegoda Road**
(ii) Length of the road : **6.123 km**
(iii) Province : **Western**
(iv) District : **Colombo**
(v) Plan specifying the land area :



(vi) Junctions on the road :

	<i>Name of the Junctions</i>	<i>Chainage At km</i>	<i>Type & Roads connected at the Junction</i>			
			<i>Left</i>		<i>Right</i>	
			<i>Type</i>	<i>Connecting to</i>	<i>Type</i>	<i>Connecting to</i>
1	Rilawala Junction	0+000	NH	Colombo - Horana (B084).	NH	Colombo - Horana (B084)
2	Kirigampamunuwa	1+622.2	PRDA	Deepangoda Kirigampamunuwa Rilawala.	PSR	Mattegoda Scheme road
3	Salgas junction	5+033.8	PRDA	Hiripitiya Siyambalagoda Pollgasowita.	PRDA	Hiripitiya Siyambalagoda Pollgasowita
4	Mattegoda junction	6+123	NH	Kottawa Thalagala (B 239).	NH	Kottawa-Thalagala (B239)

Type : NH = National Highway, PSR = Pradeshiya Sabha Road, PRDA = Provincial Road Development Authority Road.

(vii) Road Components :

(A) Culverts

<i>Type of Culverts</i>	<i>No.</i>
Culverts	24

(viii) Building Limit alongside a National Highway : Fifteen metres (15.00m) from the centre of the carriageway of Highway.

EOG 09 - 0132